

Gay Men and MSM Track: **Provincial Perspective**

Mark Gilbert

Physician Epidemiologist

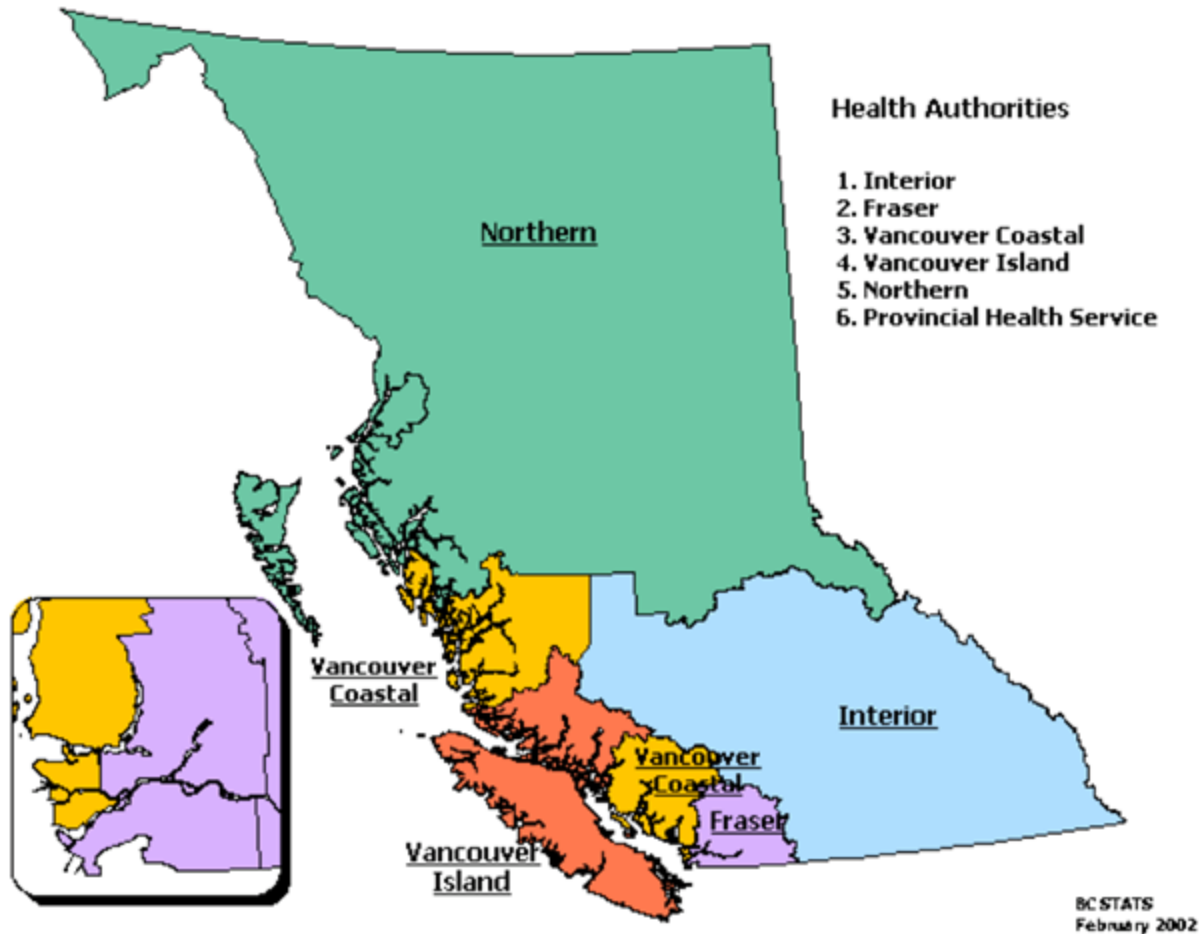
STI/HIV Prevention and Control, BCCDC

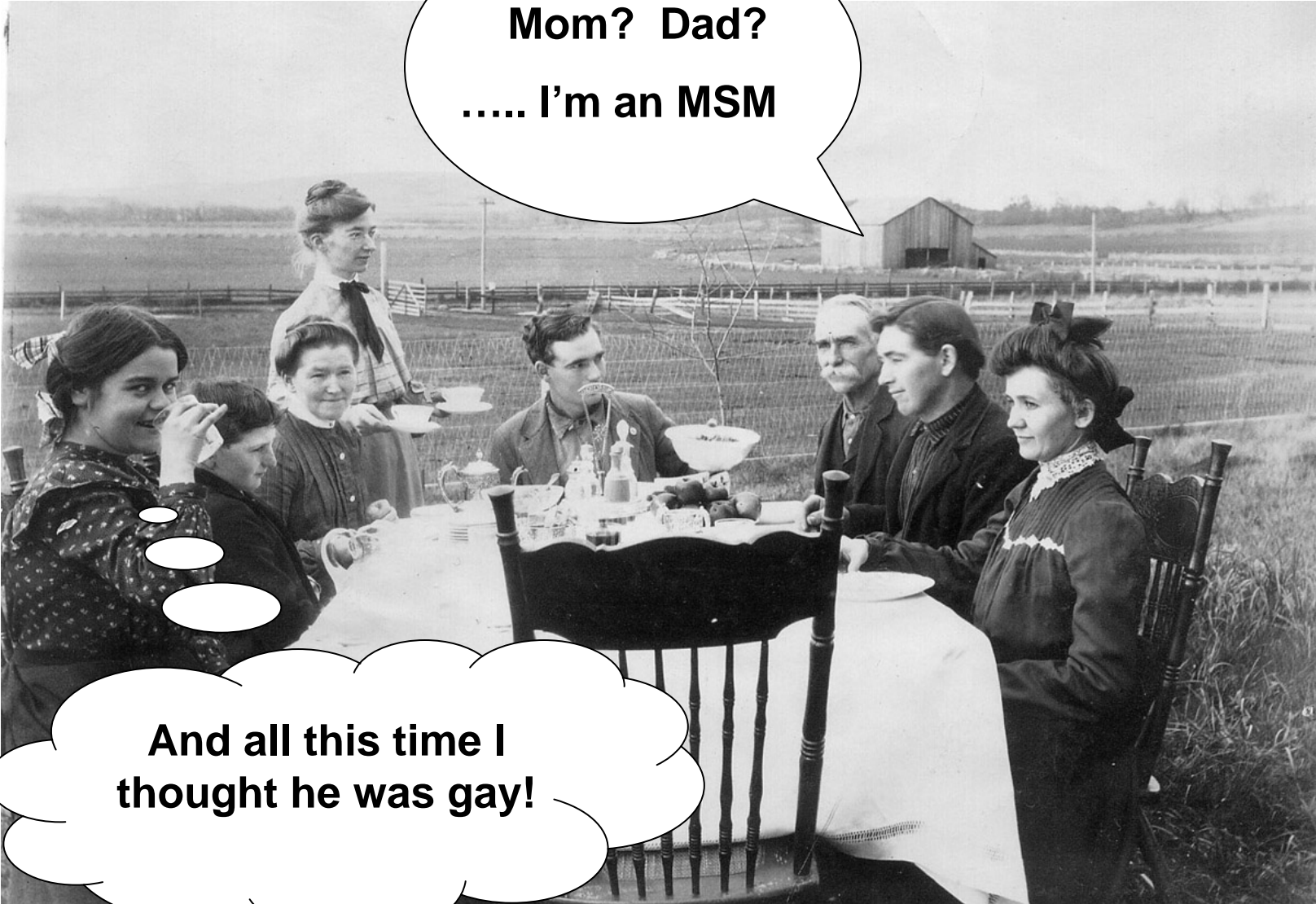
mark.gilbert@bccdc.ca

Presentation to Pacific AIDS Network Conference

October 29, 2009

What perspective?

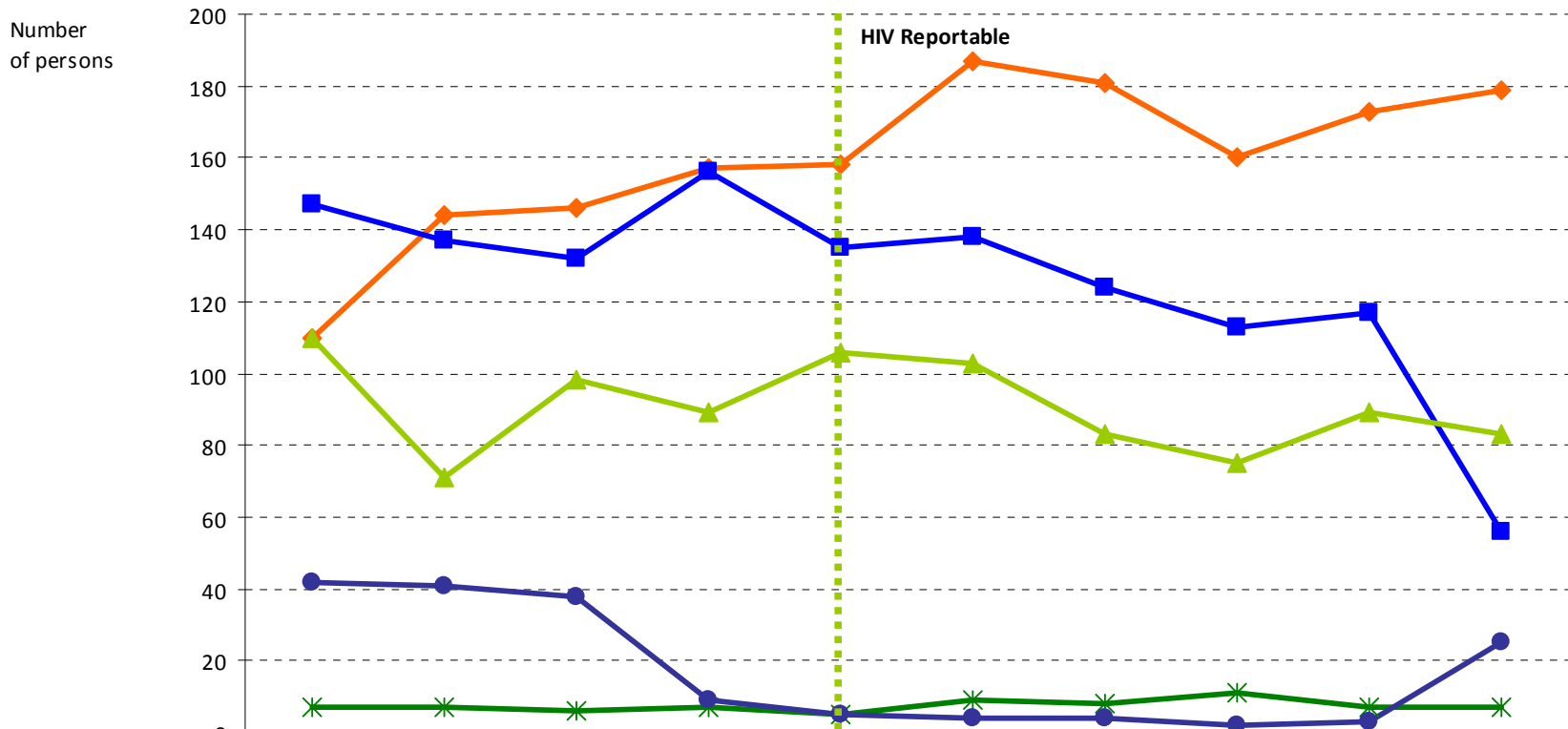




**Mom? Dad?
..... I'm an MSM**

**And all this time I
thought he was gay!**

Persons testing newly positive for HIV in BC by exposure category, 1999 to 2008



	1999	2000	2001	2002	2003	2004	2005	2006	2007	2008*
MSM	110	144	146	157	158	187	181	160	173	179
IDU	147	137	132	156	135	138	124	113	117	56
HET	110	71	98	89	106	103	83	75	89	83
Other	7	7	6	7	5	9	8	11	7	7
NIR/Unknown	42	41	38	9	5	4	4	2	3	25

*2008 risk values are not final - the number of persons in each risk category may increase as the number of unknowns decreases.

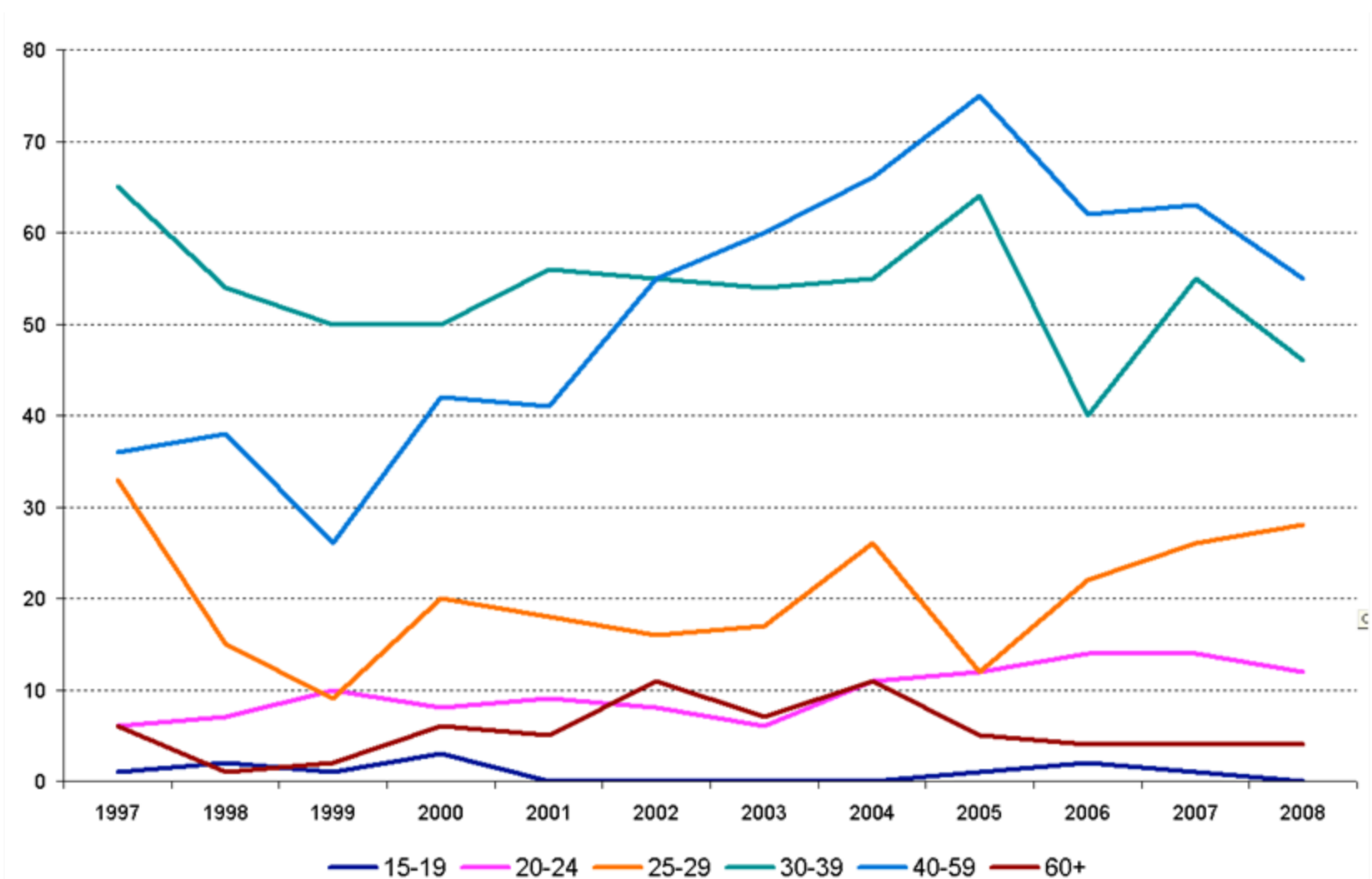
MSM = Men having Sex with Men
HET = Heterosexual contact

IDU = Injection Drug Use
NIR = No Identified Risk

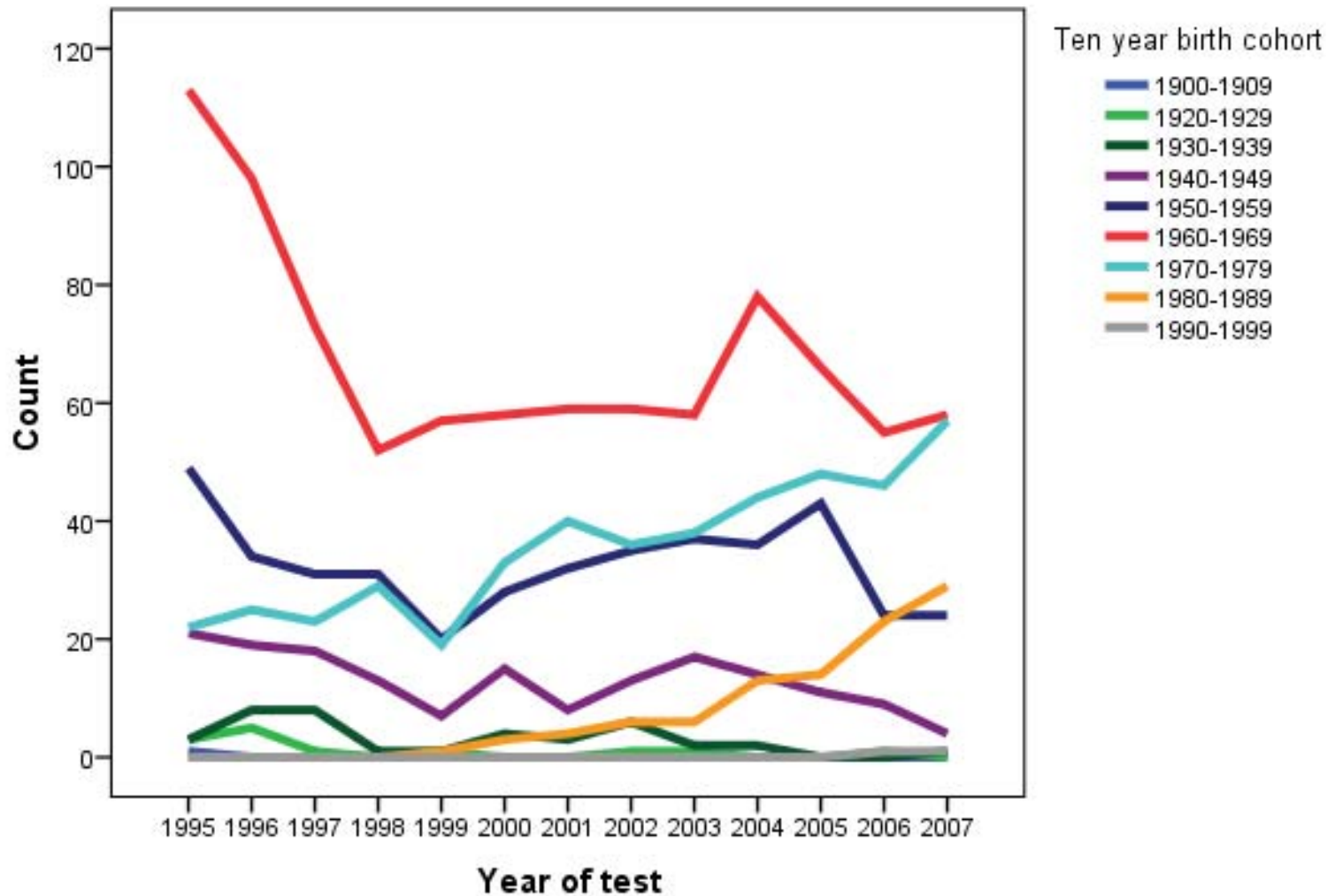
Number of MSM Testing Newly Positive for HIV in BC by HEALTH AUTHORITY, 1999 to 2008

	1999	2000	2001	2002	2003	2004	2005	2006	2007	2008
VCH	73	98	106	113	103	109	125	104	123	119
FHA	10	20	13	17	27	40	25	23	29	30
VIHA	11	7	6	9	3	15	10	8	6	18
IHA	3	4	4	6	10	4	6	7	3	10
NHA	1	0	0	0	1	1	1	2	0	2

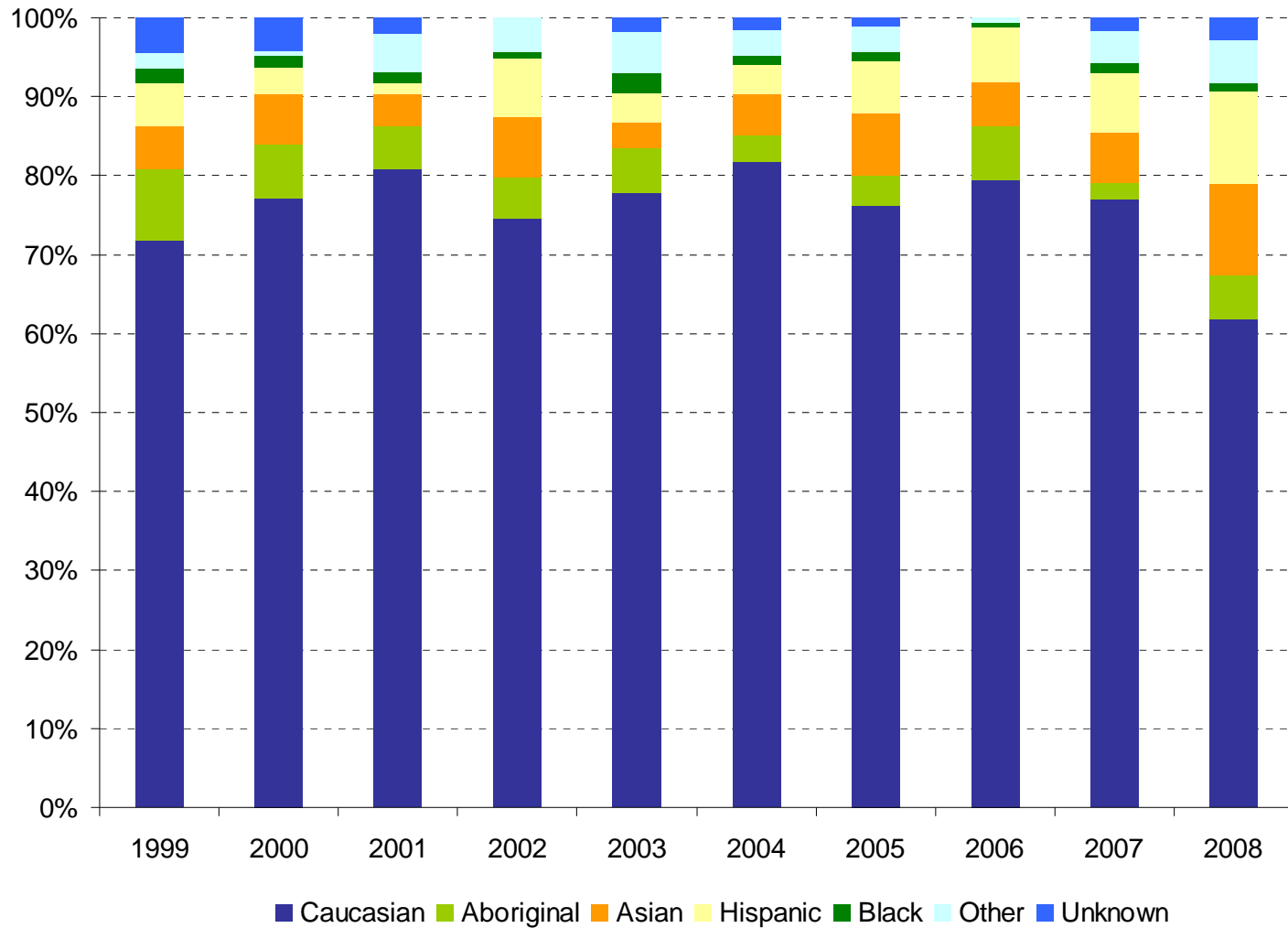
New positive HIV tests, MSM, by age group, BC, 1997-2008



New positive HIV MSM cases, by ten year birth cohort, BC, 1995-2007



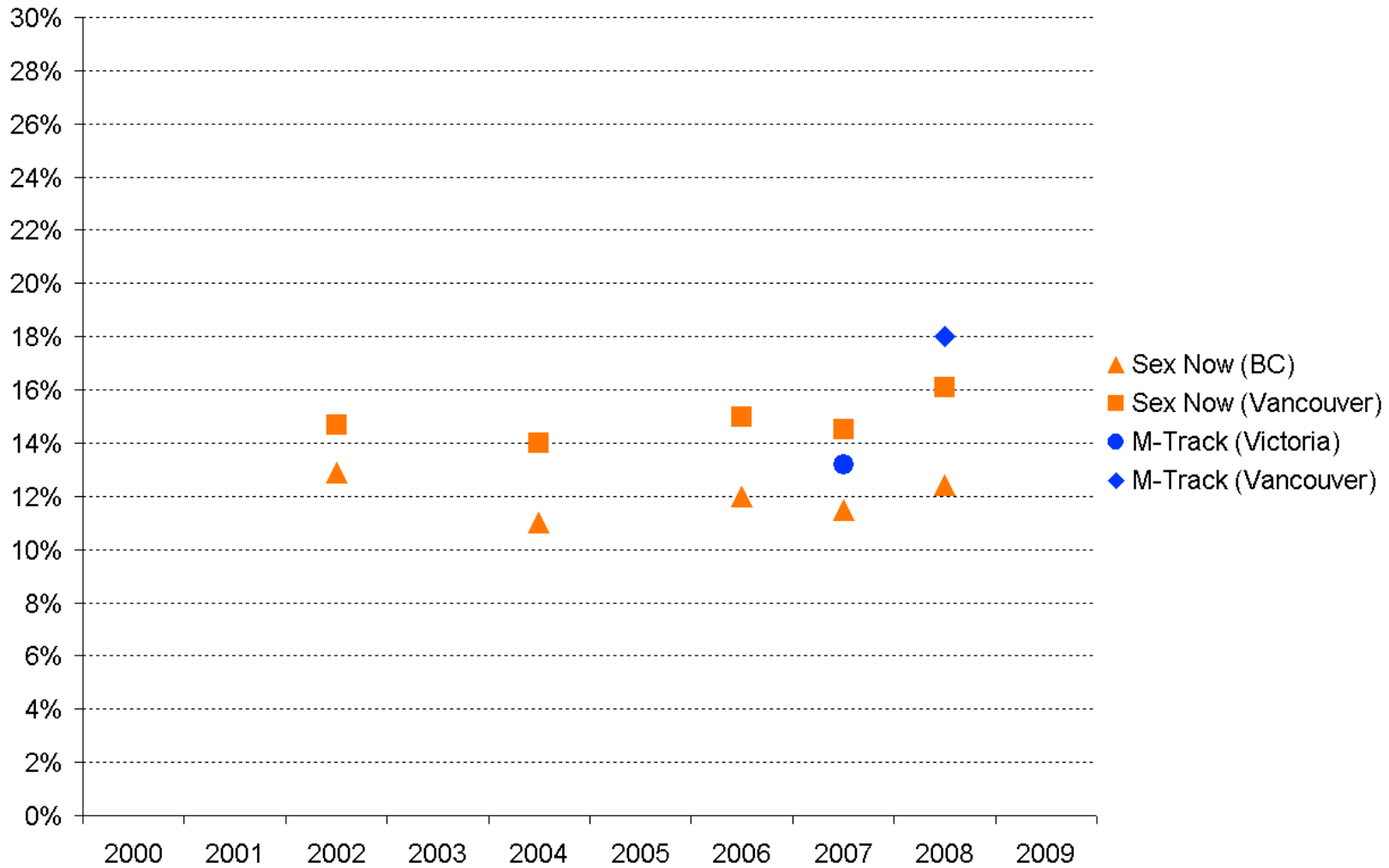
New positive HIV tests, MSM, by ethnicity, BC, 1999-2008



HIV Incidence, BC

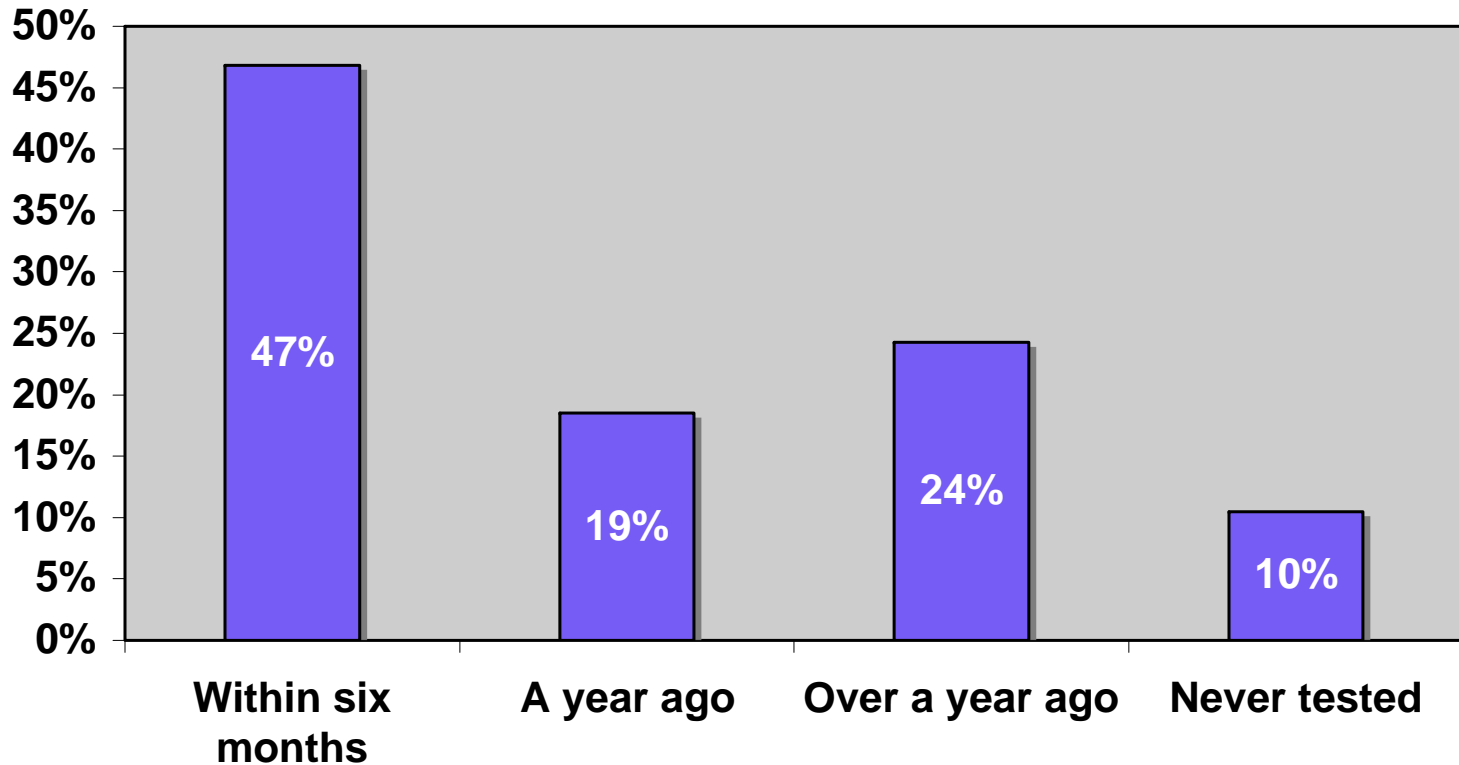
- Vanguard study
 - Incidence density (percent per person-year)
 - 1997-2001: 0.64% [0-1.12]
 - 2002-2003: 1.88% [0-3.3]

HIV prevalence, BC

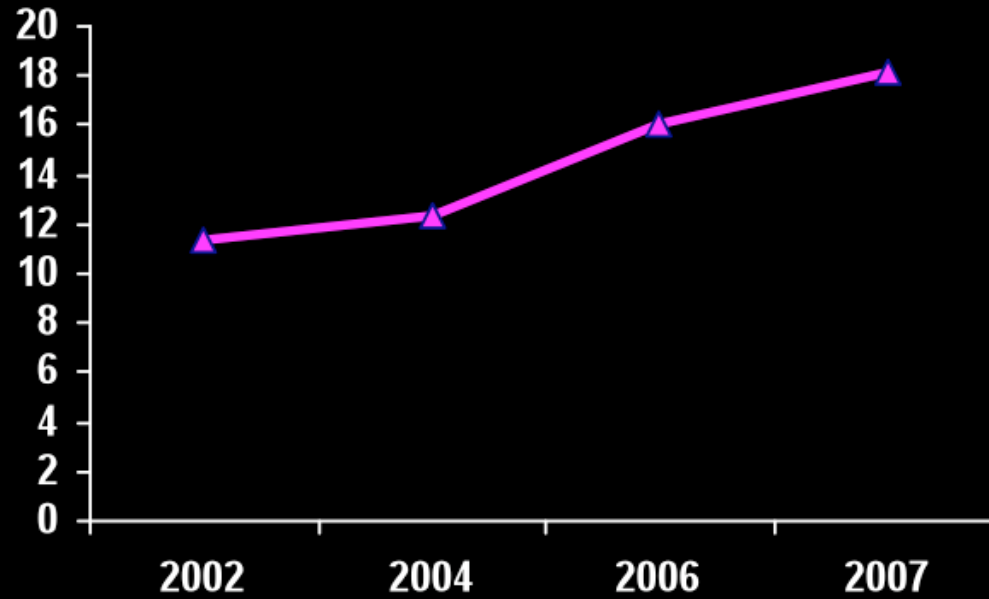


(CBRC, VIHA M-Track, ManCount)

How recent was your last HIV test?

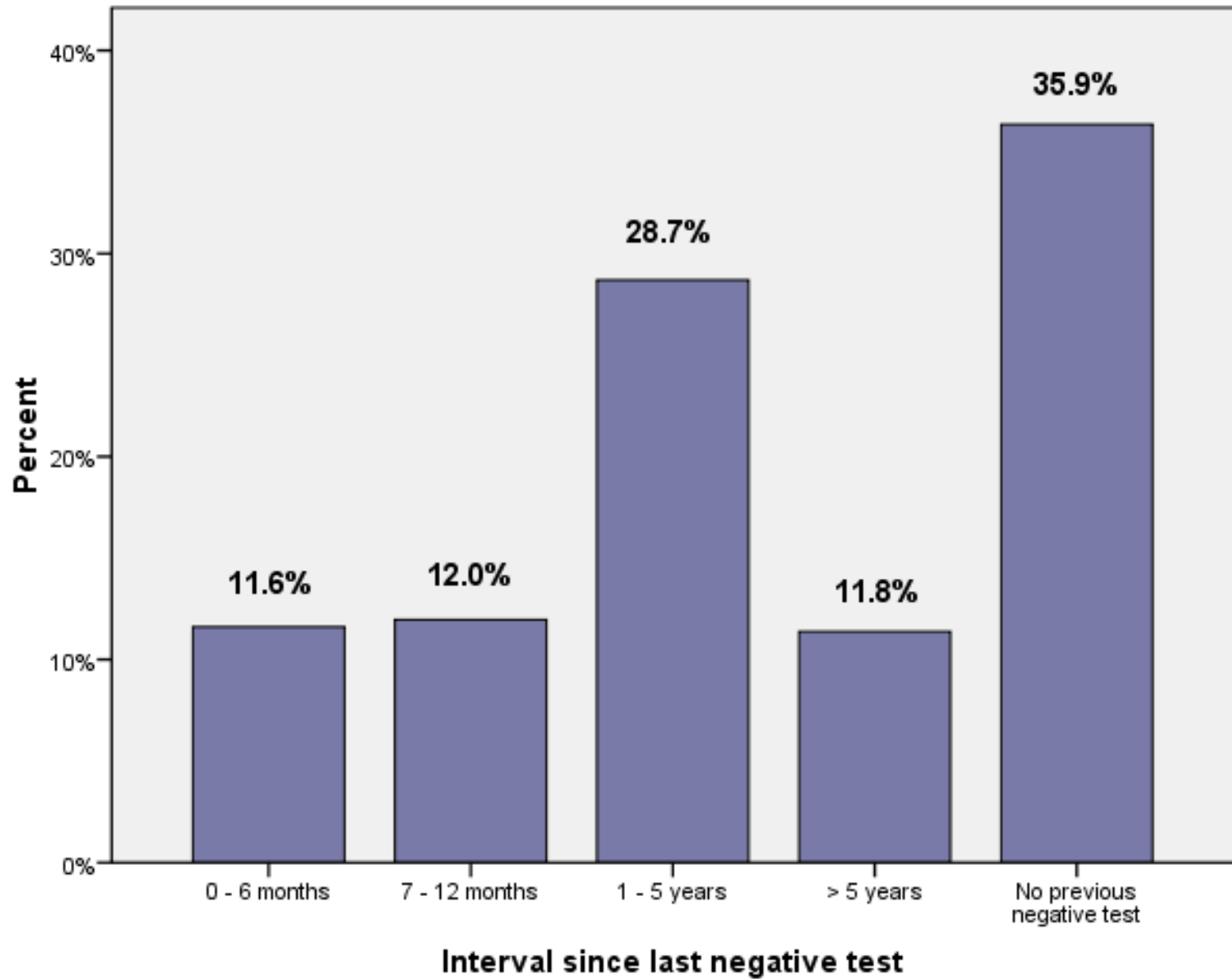


HIV Non-testers



Untested 2002 / 2007 $p=.0001$

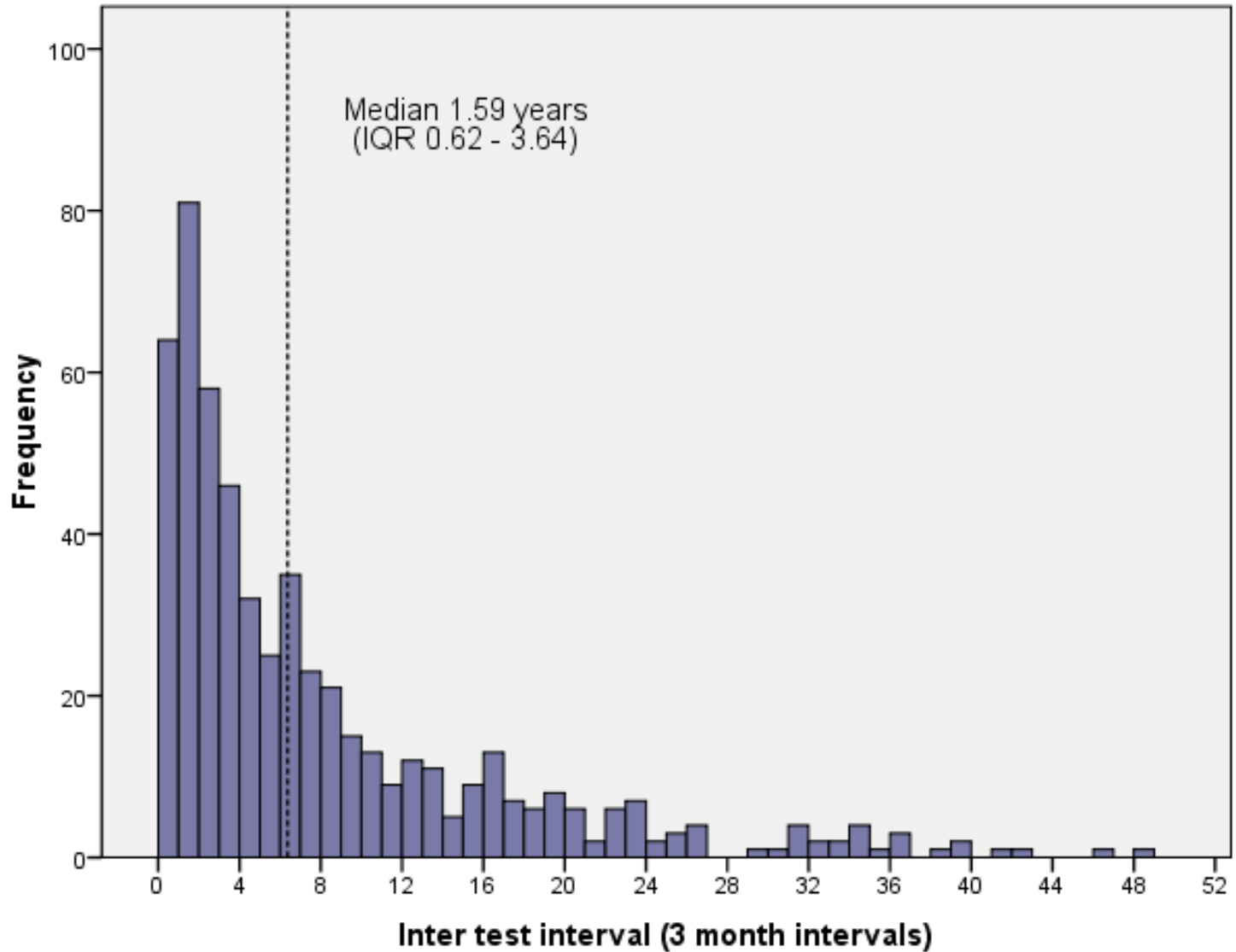
History of previous negative test, MSM, BC, 2003-2008



HIV testing

	Repeat testers		No previous negative test
	< 6 mos	< 1 year	
Sex Now (2004)	52%	73%	10%
HIV Surveillance (2003-07)	18%	36%	36%

Interval since last negative test by quarter, MSM, BC, 2003-2007

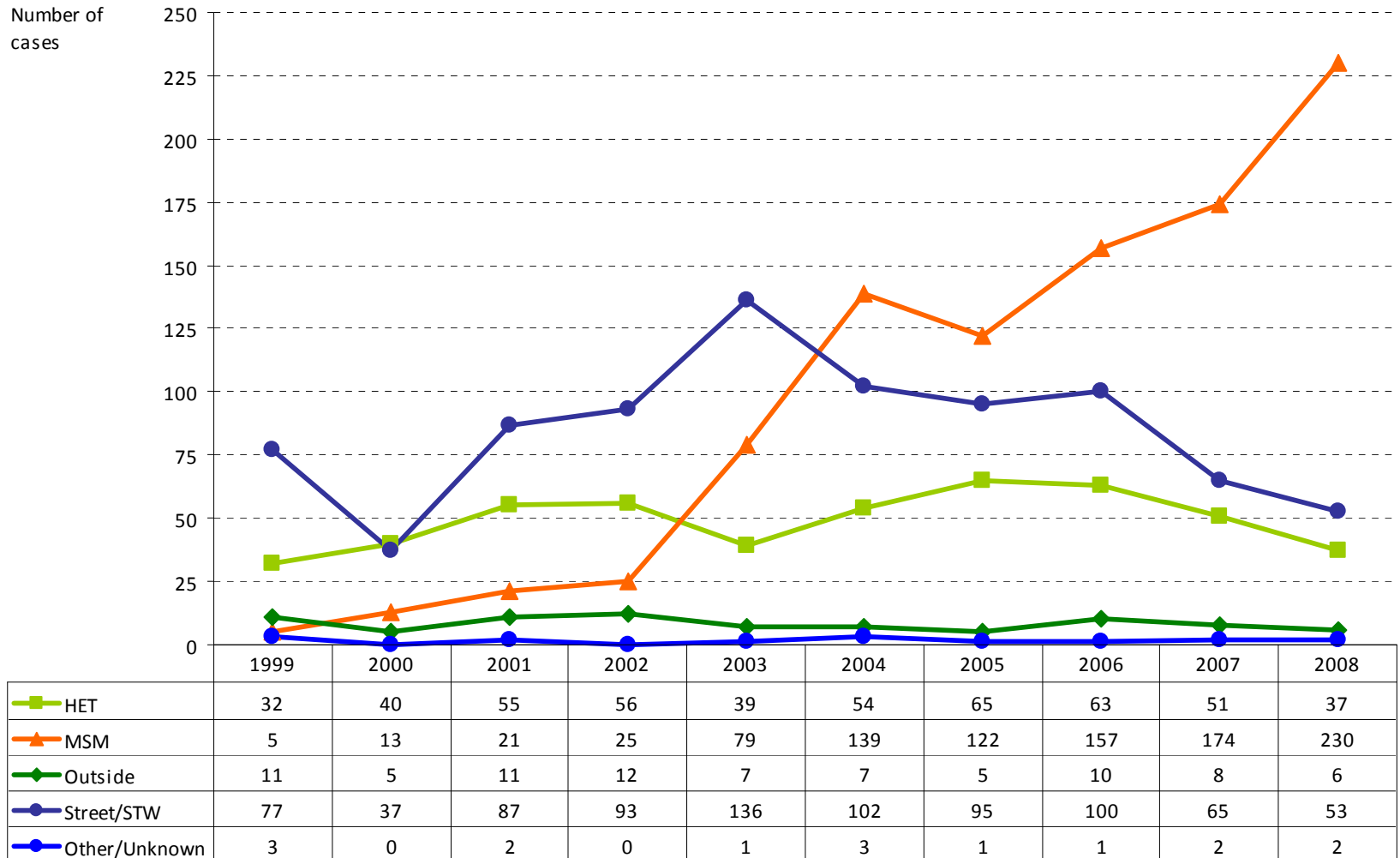


Transmission Risk



At risk 2006 / 2007 $p=.0001$

Infectious syphilis case reports in BC by exposure category, 1999 to 2008

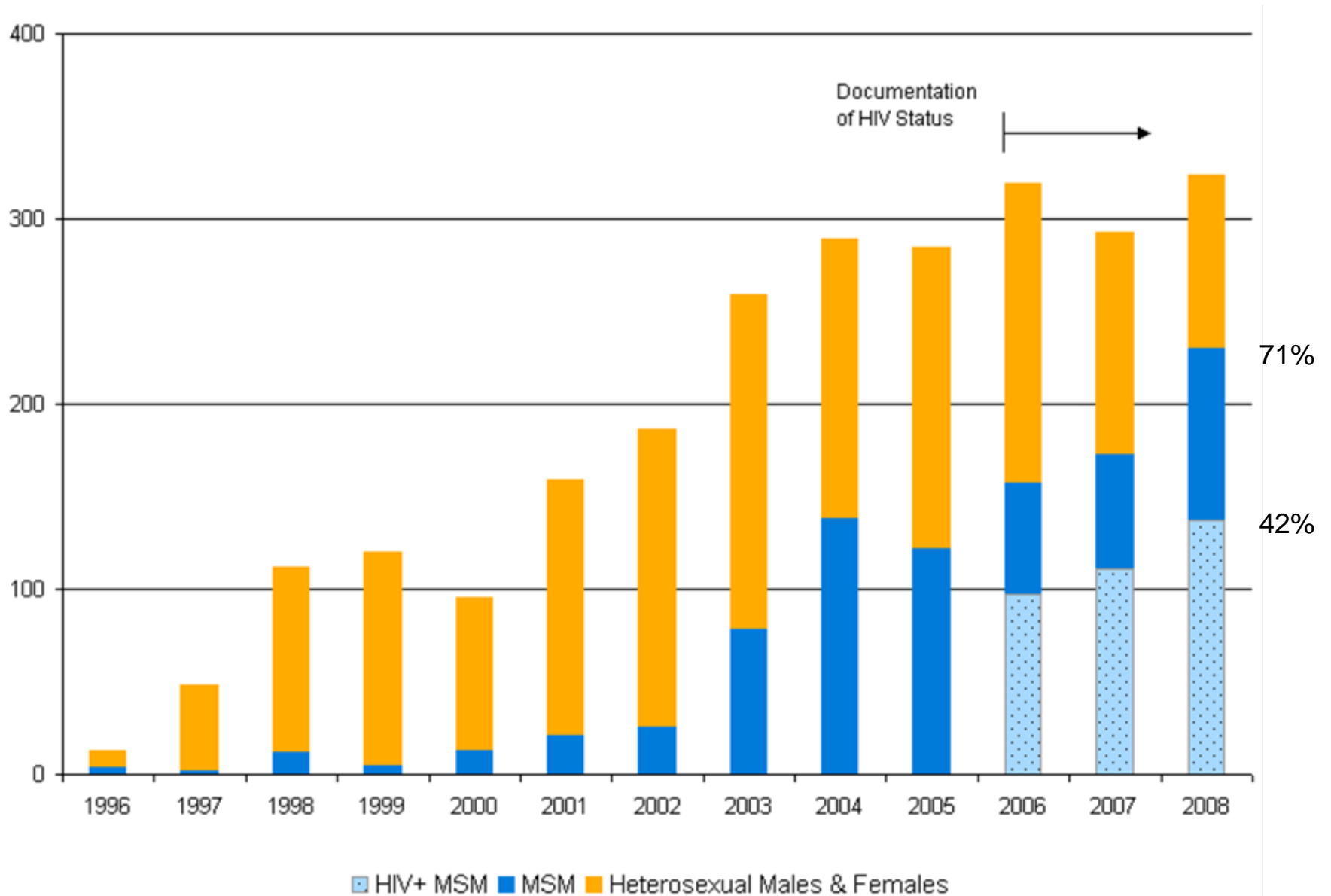


HET = Heterosexual
MSM = Men who have Sex with Men

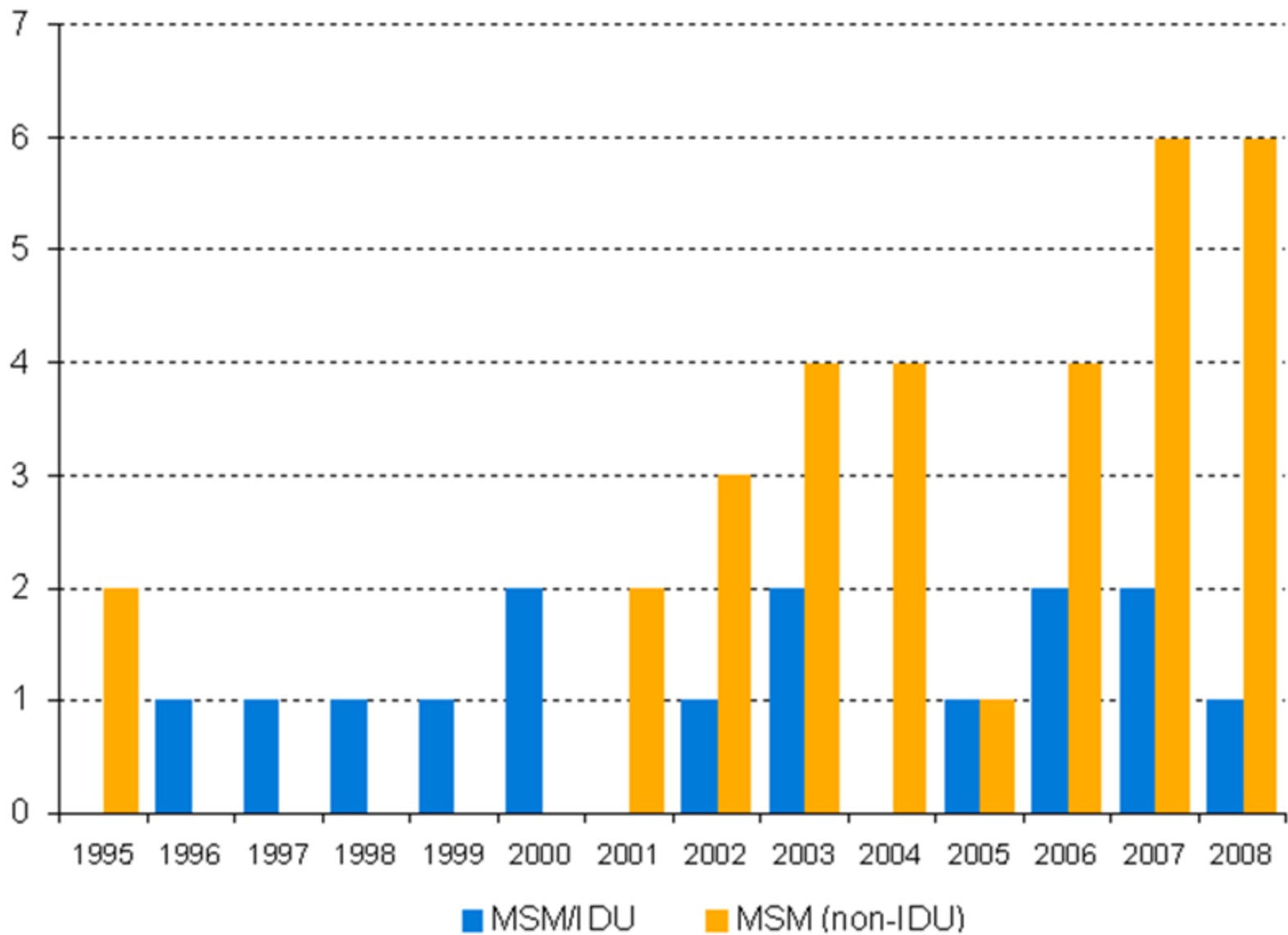
Outside = Acquired Outside of Canada
Street/STW = Street-Involved, Sex Trade Worker and Patron

Other/Unknown = Other or Unknown Risk

Infectious syphilis case reports in MSM in BC, 1996 to 2008



Hepatitis C infections in known HIV+ MSM, BC, 1995-2008



Summary

- Sustained, elevated rates of HIV infection
- Different and concerning trends by age groups
- Overall testing for HIV is high
 - More frequent testing may help
 - Some men at risk of infection are not accessing testing
- Co-infections in HIV positive men are increasing

Strategic directions

- Shifting from:
 - Individuals to populations
 - Risk reduction to determinants of health
 - Illness to wellness
 - Deficit- to asset-based
 - HIV to syndemics
 - HIV situated within gay men's health
- Community led

Emerging networks

- Increasing collaboration
- Gay Men's Health Summit
 - Community Based Research Centre
 - Forum for community, researchers, government with focus on gay men's health
 - Nov 9-10, 2009
 - <http://summit.cbrc.net>

That's my perspective!

